



Noise Monitoring Result

Day Time (0700 - 1900hrs on normal weekdays)

Location: M1a - Harbour Road Sports Centre

Date	Time	Weather	Measurement Noise Level			Baseline Level	Construction Noise Level	Limit Level
			Leq	L10	L90	Leq	Leq	Leq
Unit: dB(A), (30-min)								
29/07/13	17:30	Fine	72.9	75.0	69.0	72	65	75
05/08/13	16:45	Fine	74.3	76.5	70.5	72	70	75
13/08/13	16:57	Cloudy	73.9	75.5	69.5	72	69	75
20/08/13	17:15	Cloudy	74.6	76.5	71.0	72	71	75
27/08/13	15:45	Fine	71.5	73.5	68.0	72	72	75

Location: M2b - Noon-day gun area

Date	Time	Weather	Measurement Noise Level			Baseline Level	Construction Noise Level	Limit Level
			Leq	L10	L90	Leq	Leq	Leq
Unit: dB(A), (30-min)								
30/07/13	10:00	Fine	68.9	70.0	67.0	68	63	75
06/08/13	10:00	Fine	69.7	70.5	68.0	68	66	75
15/08/13	13:00	Cloudy	69.9	71.0	68.0	68	66	75
21/08/13	16:10	Cloudy	71.0	72.5	67.5	68	68	75
27/08/13	15:00	Fine	70.5	71.3	67.0	68	67	75

*Due to adverse weather condition, noise monitoring was rescheduled from 13 Aug 2013 to 15 Aug 2013

Location: M3a - Tung Lo Wan Fire Station

Date	Time	Weather	Measurement Noise Level			Baseline Level	Construction Noise Level	Limit Level
			Leq	L10	L90	Leq	Leq	Leq
Unit: dB(A), (30-min)								
30/07/13	10:45	Fine	69.5	70.5	67.0	69	61	75
06/08/13	10:45	Fine	67.3	68.5	65.4	69	67	75
15/08/13	11:15	Cloudy	67.0	68.5	65.0	69	67	75
20/08/13	16:15	Cloudy	66.8	68.0	64.5	69	67	75
27/08/13	13:10	Fine	67.0	69.0	64.0	69	67	75

*Due to adverse weather condition, noise monitoring was rescheduled from 13 Aug 2013 to 15 Aug 2013

Location: M4b - Victoria Centre

Date	Time	Weather	Measurement Noise Level			Baseline Noise Level	Construction Noise Level	Limit Level
			Leq	L10	L90	Leq	Leq	Leq
Unit: dB(A), (30min)								
30/07/13	13:00	Fine	68.3	69.0	66.5	67	61	75
06/08/13	11:36	Fine	69.5	70.8	67.5	67	65	75
15/08/13	10:30	Cloudy	69.8	71.0	68.0	67	66	75
20/08/13	15:30	Cloudy	69.4	70.5	67.5	67	65	75
27/08/13	14:10	Fine	68.6	70.0	67.0	67	63	75

*Due to adverse weather condition, noise monitoring was rescheduled from 13 Aug 2013 to 15 Aug 2013

Location: M5b - City Garden

Date	Time	Weather	Measurement Noise Level			Baseline Level	Construction Noise Level	Limit Level
			Leq	L10	L90	Leq	Leq	Leq
Unit: dB(A), (30min)								
30/07/13	14:20	Fine	74.0	75.6	67.5	68	73	75
06/08/13	13:05	Fine	73.7	76.5	69.0	68	72	75
15/08/13	9:40	Cloudy	72.4	73.5	70.5	68	70	75
20/08/13	14:40	Cloudy	72.0	72.0	70.5	68	70	75
27/08/13	11:20	Fine	69.8	70.5	68.0	68	65	75

*Due to adverse weather condition, noise monitoring was rescheduled from 13 Aug 2013 to 15 Aug 2013

Location: M6 - HK Baptist Church Henrietta Secondary School

Date	Time	Weather	Measurement Noise Level			Baseline Level	Construction Noise Level	Limit Level
			Leq	L10	L90	Leq	Leq	Leq
Unit: dB(A), (30-min)								
30/07/13	15:00	Fine	71.8	73.0	69.5	71	65	70
06/08/13	13:50	Fine	74.8	76.0	72.5	71	73	70
15/08/13	9:00	Cloudy	72.1	73.0	70.0	71	67	70
20/08/13	13:30	Cloudy	74.7	75.5	73.0	71	72	70
27/08/13	10:05	Fine	74.2	75.0	72.5	71	72	70

*Due to adverse weather condition, noise monitoring was rescheduled from 13 Aug 2013 to 15 Aug 2013



Noise Monitoring Result

Day Time (0700 - 1900hrs on normal weekdays)

Location: M7e - International Finance Centre (Eastern End of Podium) (Reference Station)

Date	Time	Weather	Measurement Noise Level			Baseline Level	Construction Noise Level	Limit Level
			Leq	L10	L90	Leq	Leq	Leq
Unit: dB(A), (30-min)								
29/07/13	10:33	Fine	71.6	72.5	69.5	67	70	N/A
05/08/13	14:26	Fine	74.7	77.5	71.5	67	74	N/A
15/08/13	15:25	Cloudy	72.4	75.5	69.0	67	71	N/A
21/08/13	14:30	Cloudy	74.8	77.0	71.0	67	74	N/A
28/08/13	10:05	Fine	73.1	74.0	71.5	67	72	N/A

*Due to adverse weather condition, noise monitoring was rescheduled from 13 Aug 2013 to 15 Aug 2013

Location: M7w - International Finance Centre (Western End of Podium)

Date	Time	Weather	Measurement Noise Level			Baseline Level	Construction Noise Level	Limit Level
			Leq	L10	L90	Leq	Leq	Leq
Unit: dB(A), (30-min)								
29/07/13	09:56	Fine	67.1	68.5	64.5	69	67	75
05/08/13	15:04	Fine	66.1	67.0	64.0	69	66	75
15/08/13	16:00	Cloudy	69.5	71.0	65.5	69	53	75
21/08/13	15:10	Cloudy	66.3	68.0	64.5	69	66	75
28/08/13	10:40	Fine	67.0	69.0	64.5	69	67	75

*Due to adverse weather condition, noise monitoring was rescheduled from 13 Aug 2013 to 15 Aug 2013

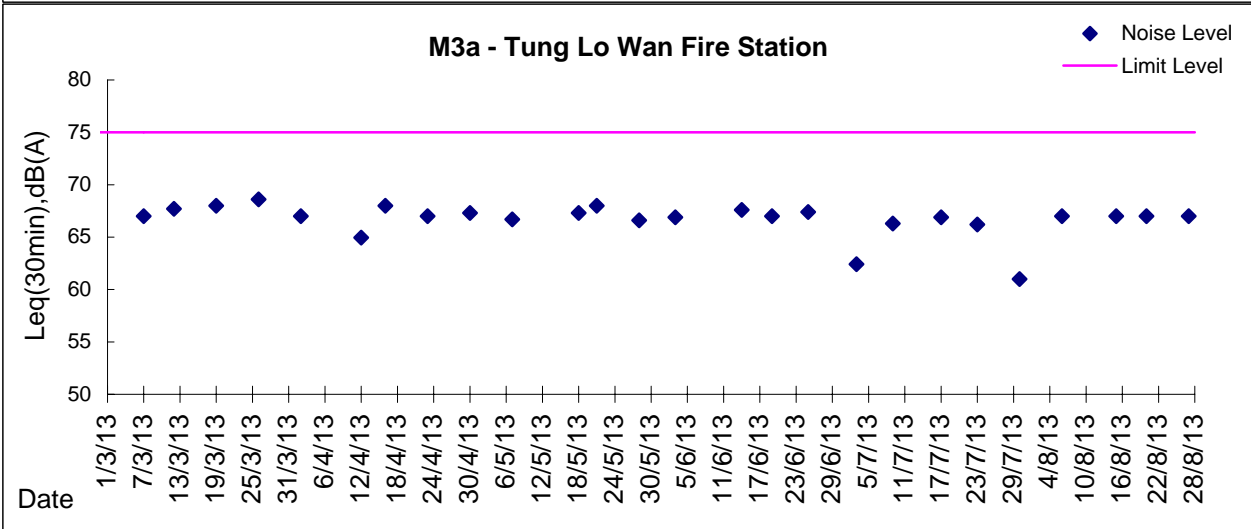
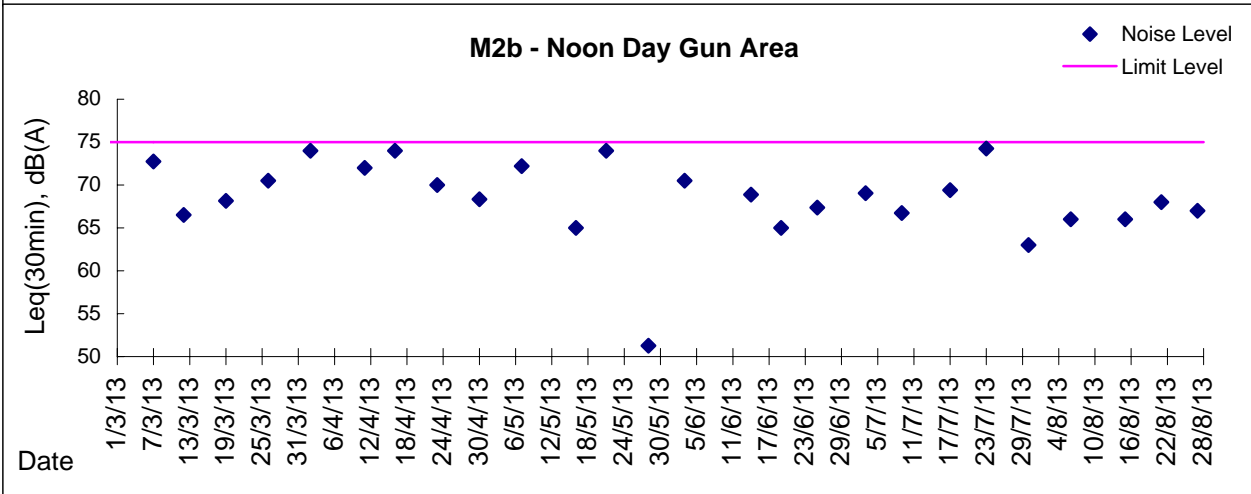
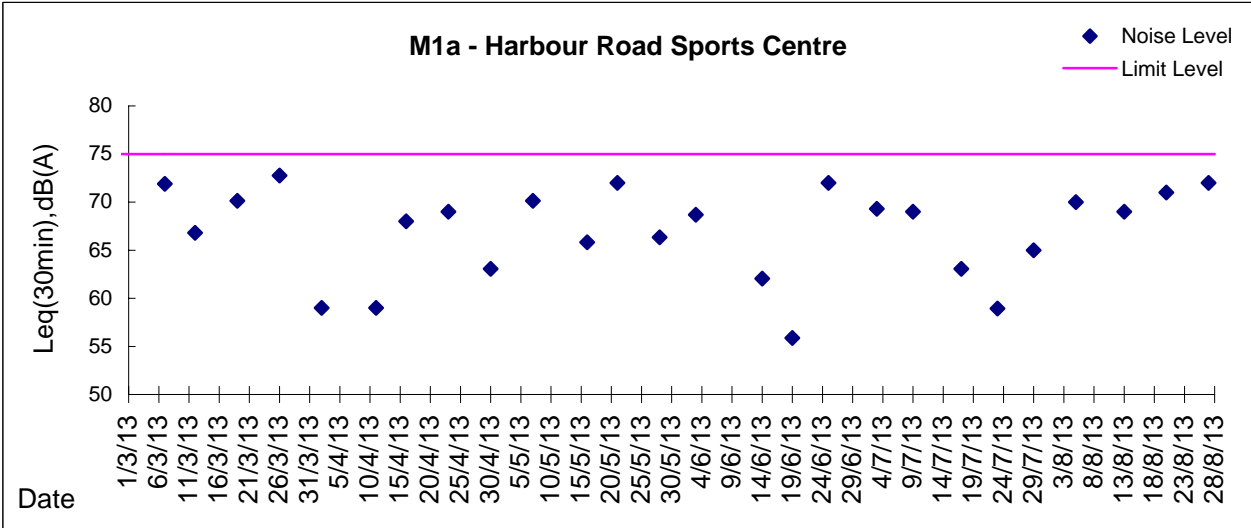
Location: M8 - City Hall

Date	Time	Weather	Measurement Noise Level			Baseline Level	Construction Noise Level	Limit Level
			Leq	L10	L90	Leq	Leq	Leq
Unit: dB(A), (30-min)								
29/07/13	09:02	Fine	61.2	62.5	58.0	64	61	70
05/08/13	15:55	Fine	60.7	62.0	57.0	64	61	70
15/08/13	14:40	Cloudy	62.2	64.0	58.0	64	62	70
21/08/13	13:40	Cloudy	64.3	67.5	61.0	64	53	70
28/08/13	11:20	Fine	59.4	61.0	57.0	64	59	70

*Due to adverse weather condition, noise monitoring was rescheduled from 13 Aug 2013 to 15 Aug 2013



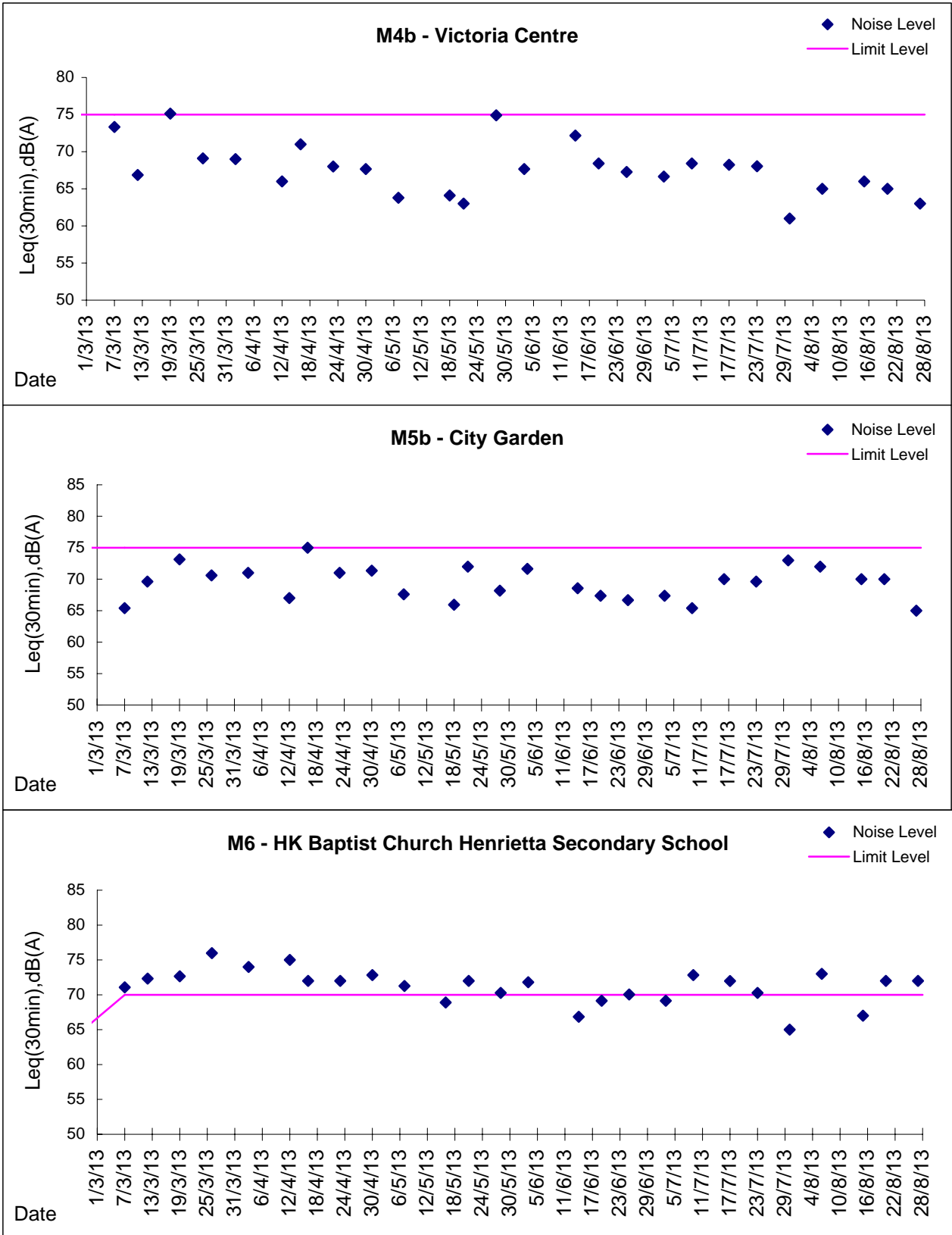
Graphic Presentation of Noise Monitoring Result
Day Time (0700 - 1900hrs on normal weekdays)





Graphic Presentation of Noise Monitoring Result

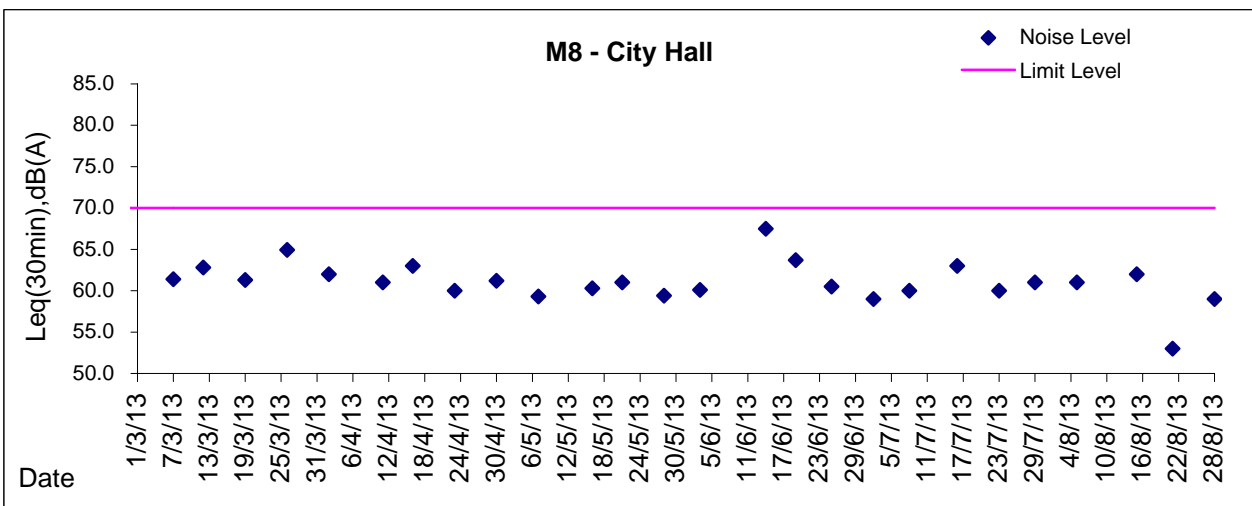
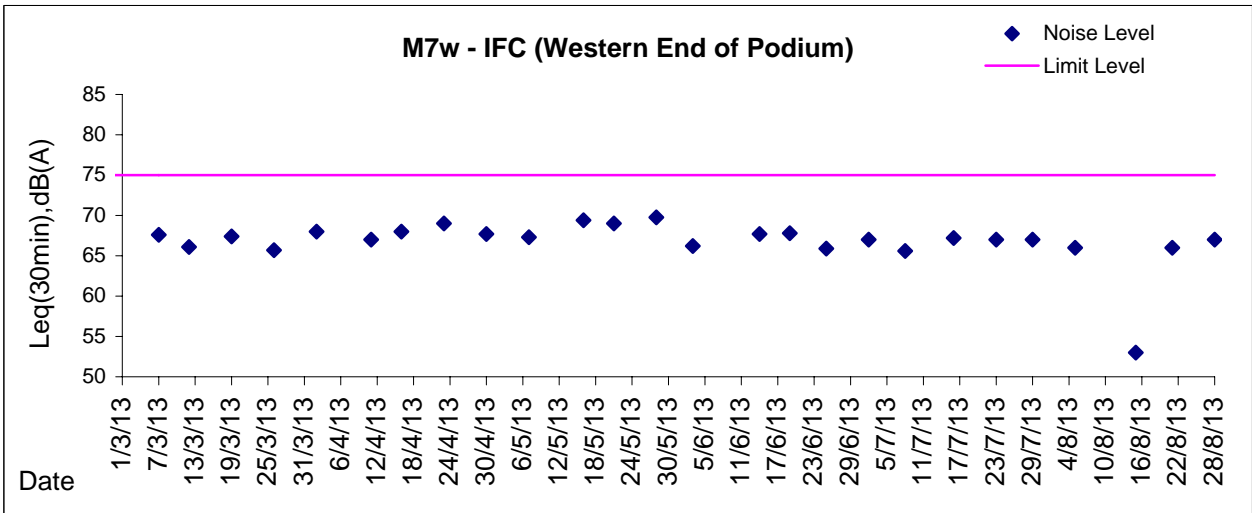
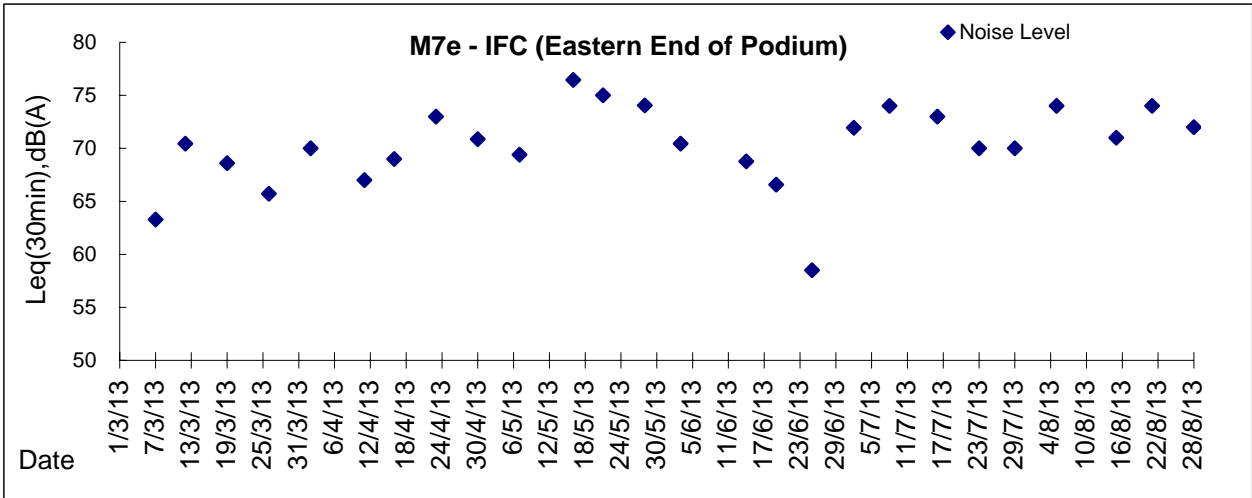
Day Time (0700 - 1900hrs on normal weekdays)





Graphic Presentation of Noise Monitoring Result

Day Time (0700 - 1900hrs on normal weekdays)



* Remark: M7e - IFC (Eastern End of Podium) is a reference monitoring station